

SERVICE LEARNING MALAYSIA UNIVERSITY FOR SOCIETY



SERVICE LEARNING MALAYSIA

SULAM

UNIVERSITY FOR SOCIETY

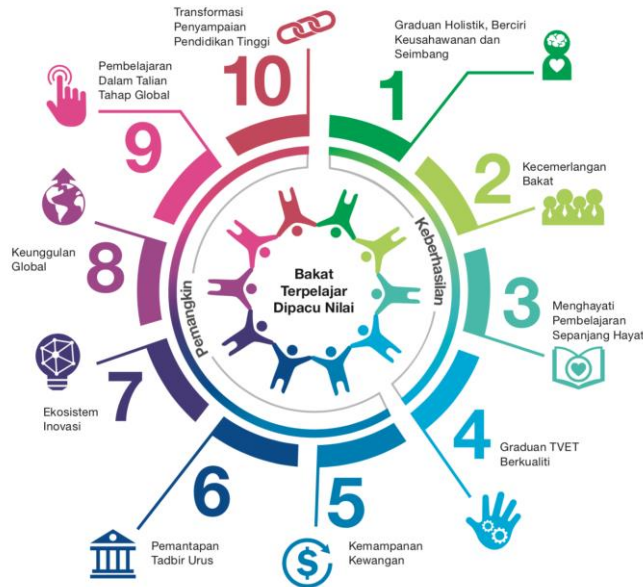
MOHD ZAKI KAMSAH
UNIVERSITI TEKNOLOGI MALAYSIA



Malaysia Education Blueprint 2015-2025 (Higher Education)

SHIFT #1

Initiative A1 Enhancing curriculum



HIEPs

1. First-Year Seminars and Experiences
2. Learning Communities
3. Common Intellectual Experiences
4. Collaborative Assignments and Projects
5. Undergraduate Research
6. Writing-Intensive Courses
7. Diversity/Global Learning
8. **Service Learning, Community-Based Learning**
9. Internships
10. Capstone Courses and Projects

DASAR KOMUNITI NEGARA



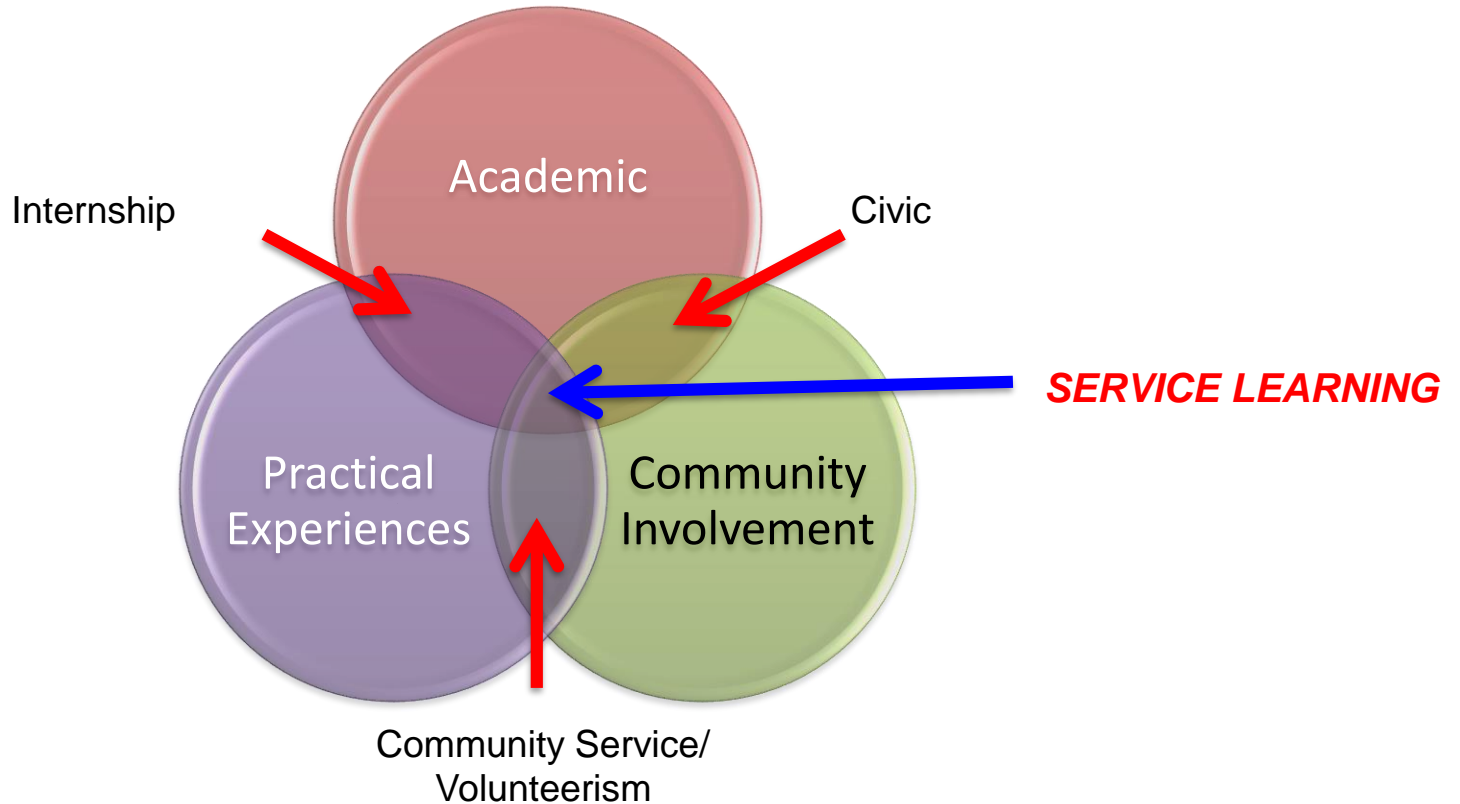
17 Feb 2019

Dasar Pembangunan Luar Bandar 2030

27 Jun 2019



SERVICE LEARNING



Examples: What might each look like?

- Volunteer at hospital
- Internship at hospital
- Service learning at hospital



Community service example

If students remove trash from a residential yard:

They are providing a **service** to the community as volunteers.



Service-learning example

- When students remove trash from a residential yard,
- analyze what they found,
- share the results and offer suggestions for the neighborhood to reduce pollution,
- and then reflect on their experience

THAT is **service-learning!**



Service Learning is:

- An element in a course in order to achieve a specific learning outcome
- A teaching and learning method
- About :
 - Enhance learning
 - Improve community
 - Transformative community engagement
 - Structured
 - Experiential learning and reflection.



Service Learning Is Not:

- An episodic volunteer program
- An add-on to an existing university curriculum
- Logging a set number of community service hours in order to graduate
- Compensatory service assigned as a form of punishment by the courts or by school administrators
- One-sided: benefiting only students or only the community



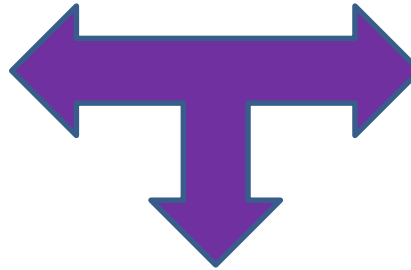
BRINGING SERVICE AND LEARNING TOGETHER

Learning Outcome

COM323 students need to improve their public relations writing skills

Community Need

The Old Folk Home needs to develop newsletter that informs the community of the variety of programs and services they provide



SULAM Strategy

Students will work at the Old Folk Home for 3 hours a week to learn about the organization. Then, after they are familiar with the organization they will produce a monthly newsletter to be distributed to the neighborhood.

Launching of SULAM @ 13 April 2019

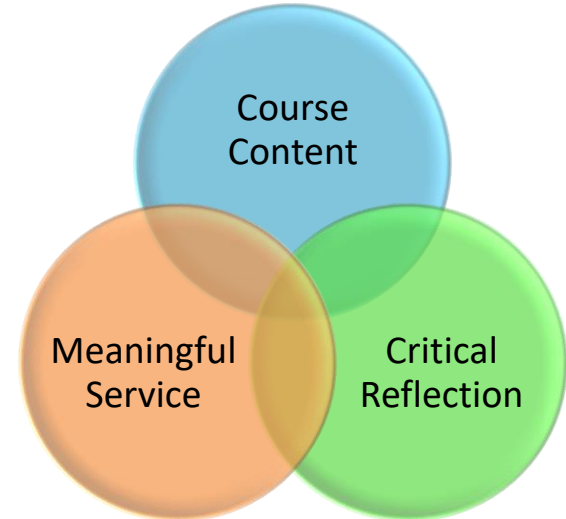
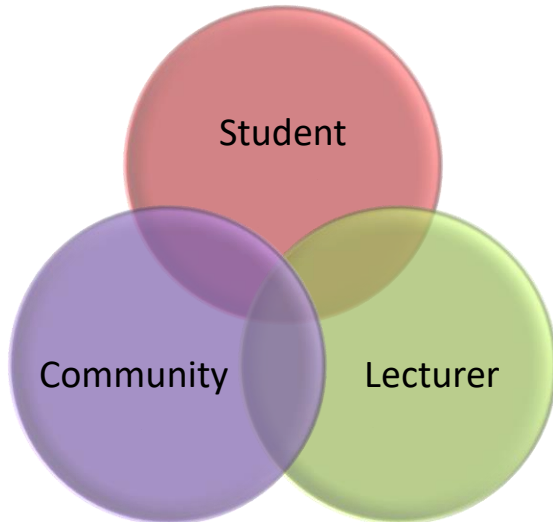


What is SULAM?

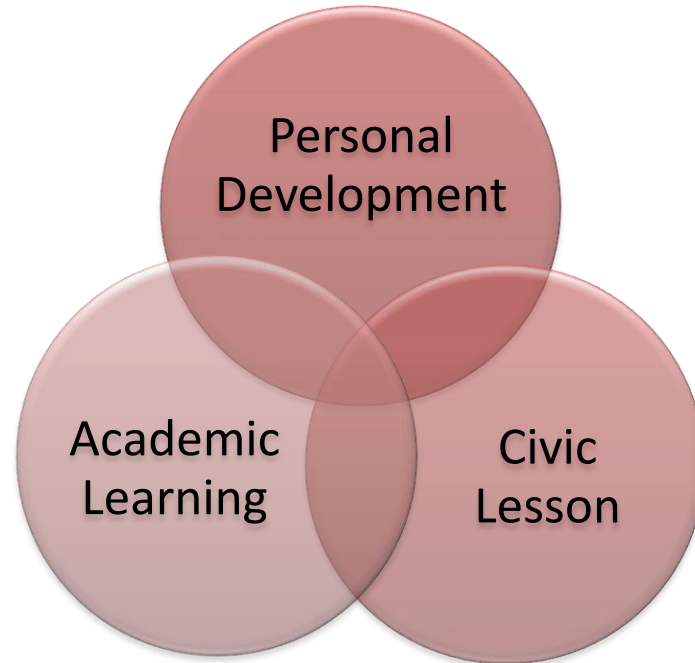
It is a **course-based, credit-bearing** educational experience in which students participate in a structured **service** activity that meets identified community needs. They will **reflect** on their service activity and experiences and relate them to the desired **learning outcomes**, in such a way they will gain deeper understanding of course content, a broader appreciation of the discipline, enhanced sense of personal values and civic responsibility.



KEY COMPONENTS OF SULAM



Learning Categories in SULAM



SULAM Benefits

Student

- Deep learning
- Personal and interpersonal development
- Civic engagement
- Tolerance of diversity

Lecturer

- New ways of teaching
- Interaction with community
- Direct impact of teaching in community
- New opportunity for research

University

- Enhanced teaching, research and outreach
- Preparation of graduates
- Positive community relationships

Community

- Participate in student learning
- Access to HLI resources
- New ideas & energy

Effective Practices in SULAM

1. The assignment is connected to Student Learning Outcomes (SLOs)
2. The assignment is connected to course content and those connections are discussed during class time
3. The service activities are organized and executed **with** the community partner, not for or to the community partner
4. The community partner is non-profit
5. Students and lecturers do not receive payment for their service
6. There is a reflection component included in the assignment
7. Students conduct a significant number of hours serving the community partner (**20 hours** over the course of a semester is recommended)
8. The service activities are a graded, required component of the course

APPROACHES TO SULAM



Direct SULAM

Person-to-person, face-to-face service projects

Indirect SULAM

Working on broad issues, environmental projects

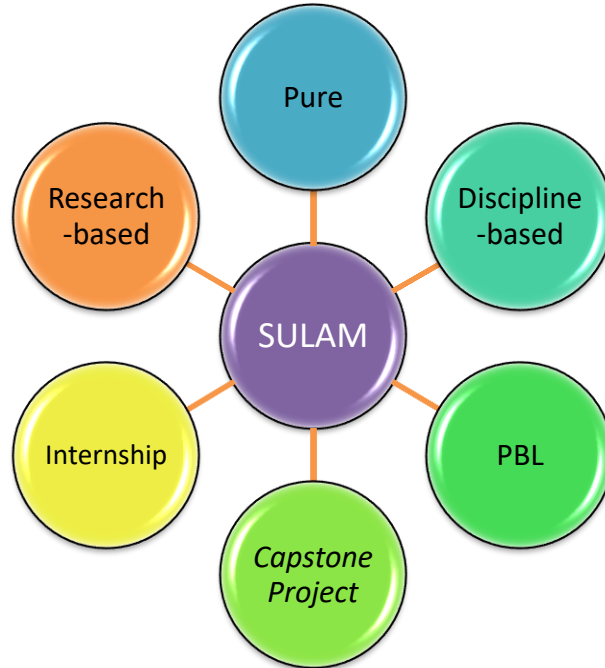
Advocacy SULAM

Educating others about topics of public interest

Research-based SULAM

Gathering and presenting information on areas of interest and need

SULAM IN CURRICULUM



Discipline-based

The learning objective is to apply technical expertise to community needs.

Problem-based

The learning objective is to solve real, community-based problems

Capstone course

Students draw upon the knowledge they have obtained throughout their course work and combine it with relevant service work in the community.

Service internship

Have regular and ongoing reflective opportunities that help students analyze their new experiences using discipline-based theories.

Undergrad Community-based action Research

Community members and students contribute equally to setting the research agenda and determining how the results will be used.

Pure/Civic based

The learning objective is to promote civic engagement.

PROGRAM PEMBANGUNAN PERSEKITARAN KOMUNITI LESTARI (2014)



Flat Taman Plentong Utama, Johor Bahru



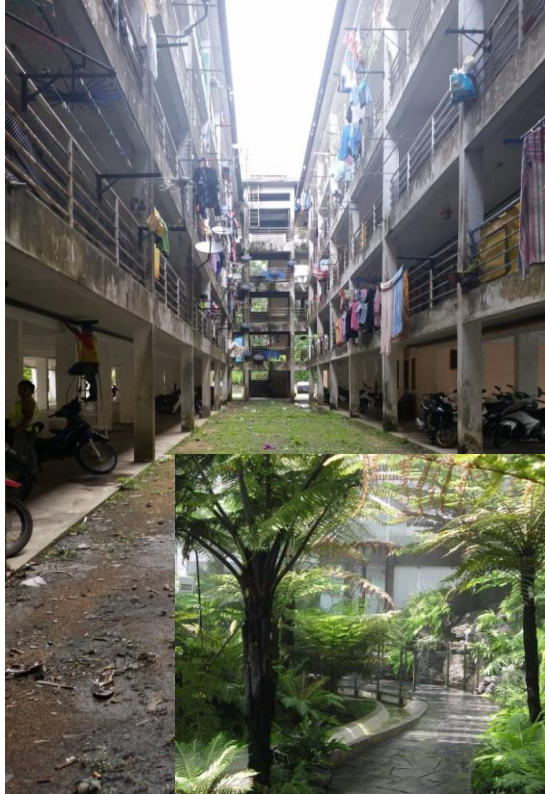
UTM
UNIVERSITI TEKNOLOGI MALAYSIA

Persekitaran Flat Taman Plentong Utama (2014)



Kawasan Tapak Sediaada: Kawasan 'courtyard' di tengah bangunan yang terbiar dan dipenuhi sampah sarap dan bahan terbuang.

Pembangunan Laman Edible



Sayur Buah – Memanjat/ kekacang



PETOLA



KACANG PANJANG



PERIA KATAK



KACANG BUNCIS



KACANG BOTOL



LABU AIR



KACANG TELANG



TIMUN



LABU



KACANG TANAH

Hasil Akhir Pembangunan Laman Edible



Sebelum



Selepas



Selepas



Selepas

Hasil Akhir Pembangunan Laman Edible



Laman Edible selepas setahun dibangunkan



Aktiviti Gotong Royong Penyelenggaraan Persekitaran oleh Komunti 2018



PROGRAM PEMBANGUNAN EKO WARISAN PELANCONGAN PROJEK KOMUNITI SULAM UTM



UTM
UNIVERSITI TEKNOLOGI MALAYSIA



Draf Cadangan Pelan Skematik Pembangunan Pelancongan Pulau Tanjung Surat



- Light purple irregular shape
- Light blue irregular shape
- Light green irregular shape
- Blue starburst symbol
- Yellow circle with 'X' symbol
- Yellow circle with 'X' symbol
- Pink irregular shape

Perancangan dan Aktiviti Komuniti SULAM Pulau Tg. Surat (2018 – 2021)



ISSUES AND CHALLENGES



Lecturer Readiness

- Course Management
- TnL Activities
- Assessment



Cost

- Fees
- CSR
- Local Authorities
- Govt. Agencies



Community Cooperation

- Community Needs
- TnL involvement
- Logistic



Industry/Corporate/Agency Involvement

- CSR – personnel, *in-kind*
- Expertise
- Networking

SULAM Network

Effective SULAM

Coordinate

Best Practices

SULAM-Net

UA

US

Colleges

Poly

TI

NGO

Corporate



SERVICE LEARNING MALAYSIA

SULAM

UNIVERSITY FOR SOCIETY

Support Group

SULAM Research

Conferences

TERIMA KASIH

